



QUICK START GUIDE

1 **STERILIZE THE RETRACTORS**

Before each use, the instruments must be sterilized following the instructions provided in use and maintenance manual.



2 **MAKE A CAREFUL EXAMINATION OF THE PATIENT'S MOUTH**

Before using the retractors, it is necessary to inspect the patient's oral cavity: make sure that there are no mucosal lesions; remove any removable prosthesis, other removable appliances, or any device in the mouth which may interfere with a safe and accurate scan.

3 **IDENTIFY THE APPROPRIATE RETRACTOR FOR THE ARCH YOU ARE GOING TO SCAN**

Each LO RUSSO RETRACTORS kit has three instruments: two for the mandibular arch (one for the right side and one for the left side), and one for the maxillary arch.



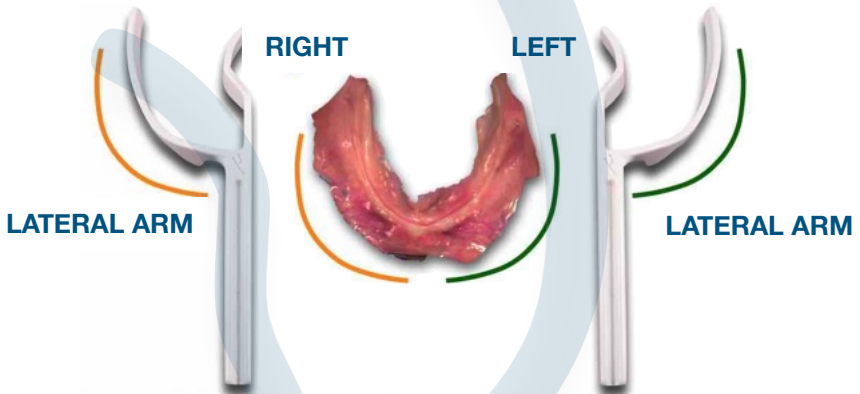
3 RETRACTORS / KIT

KITS OF
3 SIZES



4 FOR THE MANDIBULAR ARCH, YOU NEED TWO RETRACTORS: RIGHT, AND LEFT SIDE.

The distinction of left and right retractor is very simple and intuitive, just let yourself be guided by the analogy between the shape of the lateral arm of retractors for the lower arch and the shape of the arch.

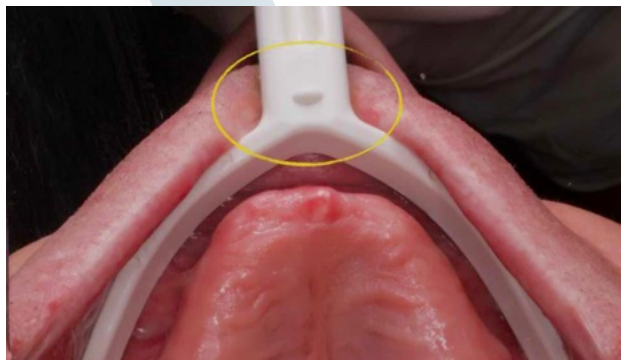


Remember: be sure that the engraved LO RUSSO RETRACTORS logo on the handle faces the operator.

5 CAREFULLY SELECT THE SIZE OF THE RETRACTORS.

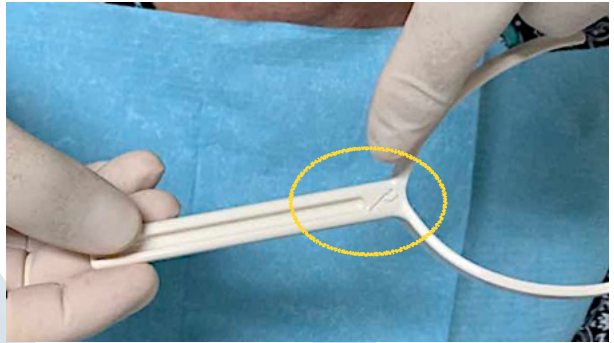
On the retractors' handle, on the side opposite the LO RUSSO RETRACTORS logo, there are small raised dots (visible and appreciable to the touch) which identify the size of the instrument.

No dot = size 0;
One dot = size 1;
Two dots = size 2.



6 HOLD THE RETRACTOR BY THE HANDLE AND ORIENT IT CORRECTLY

To ensure correct orientation of the instruments, the logo engraved on the handle must be facing the operator.



7 INSERT THE RETRACTOR INTO THE PATIENT'S MOUTH

Attention should be paid while inserting the instrument into the patient's mouth. This is carried out by performing a small rotation movement of instrument's arms, similar to the movement made to insert an impression tray.



Scan the appropriate QR code for a video demonstration

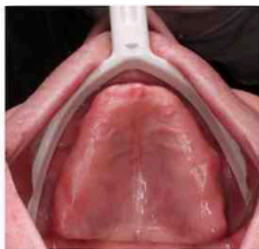


Maxilla

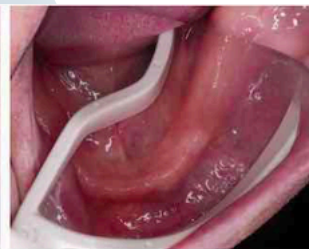
Mandible

8 PLACE THE INSTRUMENT IN ITS POSITION OF USE

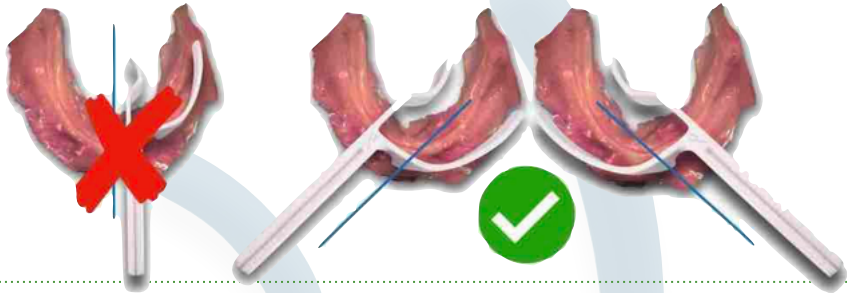
Maxillary arch



Mandibular arch



For the lower arch, the instruments must NOT be oriented parallel to the sagittal plane, but according to what is shown in the following images.



9 CAPTURE YOUR OUTSTANDING SCAN

Prior to beginning any scan, it is mandatory to have a clear scanning strategy. As guidance, scan the QR code to review the most appropriate scanning strategies.



10 REMOVE THE INSTRUMENT FROM THE PATIENT'S MOUTH

After using the instrument, it must be removed with caution, with a movement opposite to that of insertion.

11 START THE CLEANING AND STERILIZATION PROCEDURE FOR THE USED INSTRUMENTS.

Correct cleaning and sterilization of instruments, before and after each use, is a fundamental prerequisite for protecting the health of patients and staff. Always refer to the instructions provided in use manual, the specific operating procedures for the healthcare facility, and requirements by local legislation.

Follow us on:

